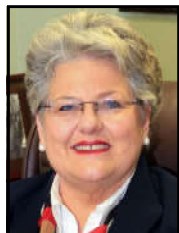


**Kentucky
Candidate
Information
Survey**



www.votekentucky.us

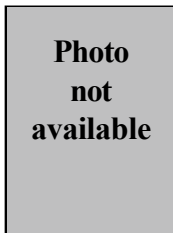
21st SENATE DISTRICT - REPUBLICAN PRIMARY



**Kay
Hensley**



**Sen. Albert
Robinson**



**Brandon
Storm**

<p><i>The best way to prepare Kentucky students for the modern economy is a strong, content-rich, basic education for every child.</i></p>	<p><u>“STRONGLY AGREE.”</u></p>	<p><u>“STRONGLY AGREE.”</u></p>	
<p><i>Leaders should make reforming Kentucky’s antiquated tax system a top priority.</i></p>	<p><u>“STRONGLY AGREE.”</u></p>	<p><u>“AGREE.”</u></p>	<p style="text-align: center; border: 1px solid black; padding: 5px;">Candidate chose not to participate.</p>
<p><i>In Kentucky schools, women should compete against biological women (not biological men who identify as women) in athletic contests.</i></p>	<p><u>“STRONGLY AGREE.”</u></p>	<p><u>“STRONGLY AGREE.”</u></p>	
<p><i>Kentucky should pass legislation raising the minimum wage.</i></p>	<p><u>“STRONGLY DISAGREE.”</u> This would cause difficulties for small businesses and would not accomplish the wanted effect long-term.”</p>	<p><u>“DISAGREE.”</u></p>	
<p><i>The state should acknowledge global warming and work to limit Kentucky’s contribution to it.</i></p>	<p><u>“STRONGLY DISAGREE.”</u></p>	<p><u>“UNDECIDED.”</u></p>	
<p><i>The state should stop U of L’s partnership with Louisville’s oldest abortion clinic.</i></p>	<p><u>“STRONGLY AGREE.”</u> I am strongly pro-life and oppose any abortion.”</p>	<p><u>“STRONGLY AGREE.”</u></p>	
<p><i>Public schools should allow students to use bathrooms and locker rooms in accordance with their chosen gender identity.</i></p>	<p><u>“STRONGLY DISAGREE.”</u></p>	<p><u>“STRONGLY DISAGREE.”</u></p>	
<p><i>A tuition tax-credit system should be established for needy students wanting to go to non-public schools.</i></p>	<p><u>“UNDECIDED.”</u> I would support a pilot project for a tuition tax credit system for non-public schools.”</p>	<p><u>“STRONGLY AGREE.”</u></p>	
<p><i>To reduce teen pregnancies, minors should have access to contraception without parental knowledge.</i></p>	<p><u>“STRONGLY DISAGREE.”</u></p>	<p><u>“DISAGREE.”</u></p>	
<p><i>Kentucky should legalize recreational marijuana.</i></p>	<p><u>“STRONGLY DISAGREE.”</u></p>	<p><u>“STRONGLY DISAGREE.”</u></p>	
<p><i>The legislature should pass a statewide “Fairness Ordinance.”</i></p>	<p><u>“STRONGLY DISAGREE.”</u></p>	<p><u>“STRONGLY DISAGREE.”</u></p>	
<p><i>Churches and religious groups must be protected from state discrimination on the basis of their beliefs about marriage and sexuality.</i></p>	<p><u>“STRONGLY AGREE.”</u></p>	<p><u>“STRONGLY AGREE.”</u></p>	

**Kentucky
Candidate
Information
Survey**



www.votekentucky.us

21st SENATE DISTRICT

Bath, Estill, Jackson, Laurel, Menifee and Powell Counties

Republican Primary



Kay Hensley

khensleyattorney@roadrunner.com

Sen. Albert Robinson

albert@albertrobinson.net

Brandon Strom

<i>To protect the poor, the state should act to curb exorbitant interest rates charged by payday lending companies.</i>	"STRONGLY DISAGREE."	"AGREE."	
<i>Personal and creative service businesses should not be forced to produce goods or services that violate their rights of conscience.</i>	"STRONGLY AGREE."	"STRONGLY AGREE."	Candidate chose not to participate.
<i>Illegal immigrants should be prohibited from obtaining driver's licenses and other government documents.</i>	"STRONGLY AGREE." These are privileges of citizens - these immigrants have the option of becoming a citizen legally to get these privileges too."	"STRONGLY AGREE."	
<i>Recent school shootings prove that we need more restrictive gun laws.</i>	"STRONGLY DISAGREE." This would only prevent law abiding citizens from having and using guns, not those who use them for evil."	"STRONGLY DISAGREE."	
<i>Because they leave children sterile for life, transgender surgeries and hormone treatments on minors should be banned.</i>	"STRONGLY AGREE." This is only one of the many reason I oppose these treatments."	"STRONGLY AGREE."	
<i>Schools should familiarize students with all sides of debates on issues like evolution and global warming.</i>	"STRONGLY AGREE."	"AGREE." Students should see all sides and decide for themselves."	
<i>Kentucky should pass expanded gambling legislation to fund state pensions.</i>	"UNDECIDED."	"STRONGLY DISAGREE."	
<i>University of Kentucky's tuition is now several times higher than in 2002. All state college tuition increases should be limited.</i>	"UNDECIDED."	"STRONGLY AGREE."	
<i>List your top three priorities should you be elected.</i>	"1. Protect constitutional rights. 2. Support small businesses. 3. Repair state pensions."	"1. Protect and defend our Constitution. 2. As in the past, keep promoting a conservative agenda. 3. Guard against legislation that infringes on our rights."	

Vote Kentucky!

About the Kentucky Candidate Information Survey (KCIS) . . .

- The purpose of the **KCIS** is to reliably report candidates' views to voters, thereby improving:
 - 1) voter knowledge of the candidates;
 - 2) voter participation; and therefore,
 - 3) the quality of the democratic process.
- The **Survey** is designed to neutrally, yet concisely, report the candidates' views in their own words on a broad range of issues. Each candidate was asked to respond to the assertions listed and was given 20 words to qualify his or her response. This issues-only, head-to-head approach avoids pushing a particular agenda, but at the same time, cuts through the political rhetoric often found in campaign literature.
- The **Survey** is a non-partisan project of the Family Trust Foundation of Kentucky, a non-profit educational organization founded in 1989. The Trust was incorporated in order to encourage and strengthen families and family life in our state. Encouraging responsible citizenship and increasing voter participation are two of its objectives.
- For more information, visit us on the web:

www.votekentucky.us

**Be sure to take
time to vote
on Tuesday,
May 17!**